



**BASIN ELECTRIC
POWER COOPERATIVE**

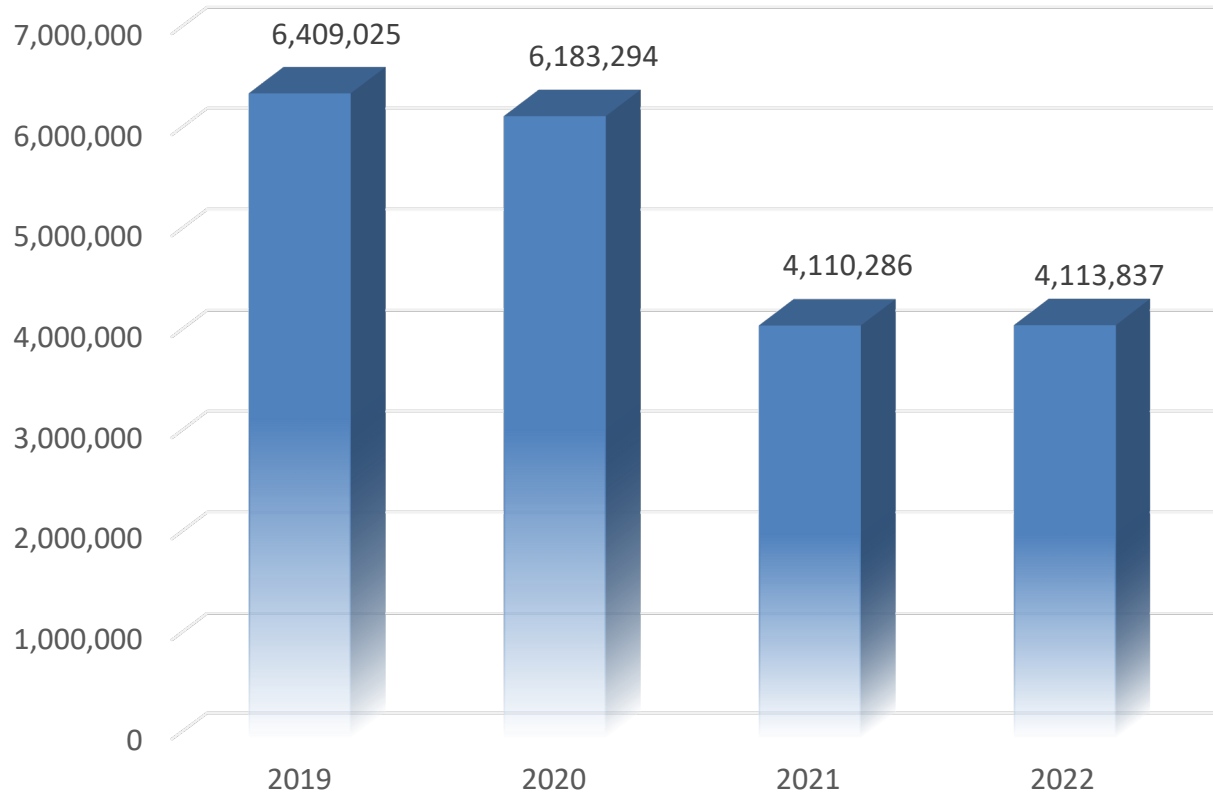
A Touchstone Energy® Cooperative 

Lignite Energy Council

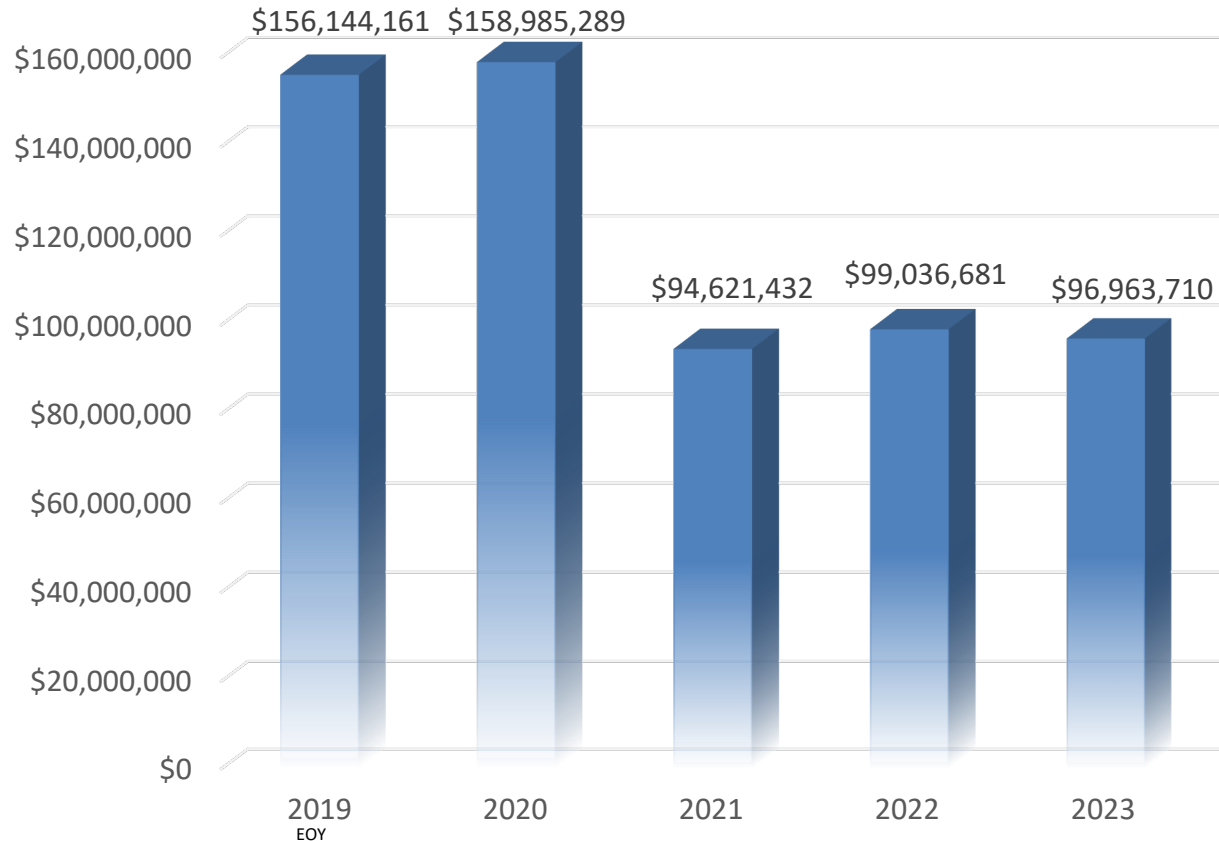
April 2019

Antelope Valley Station
Chad Edwards

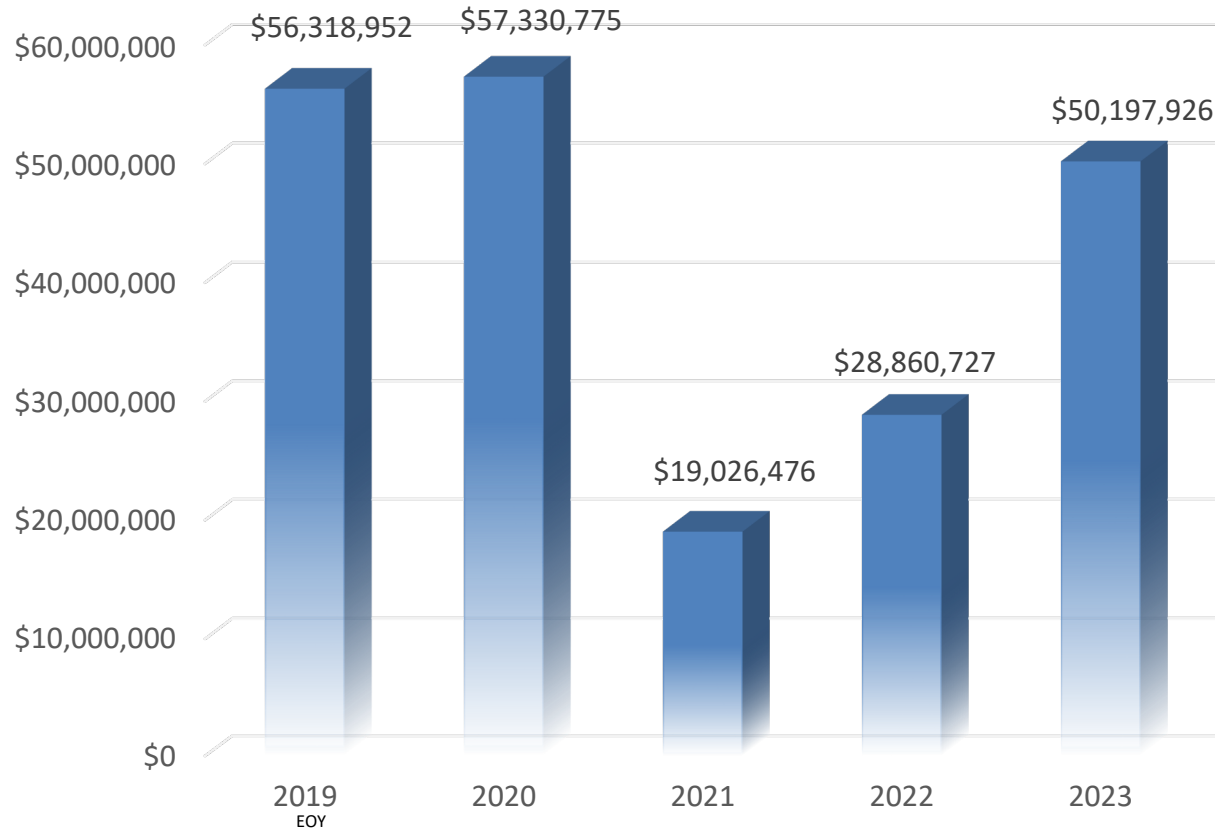
Projected Net Generation - MWH's



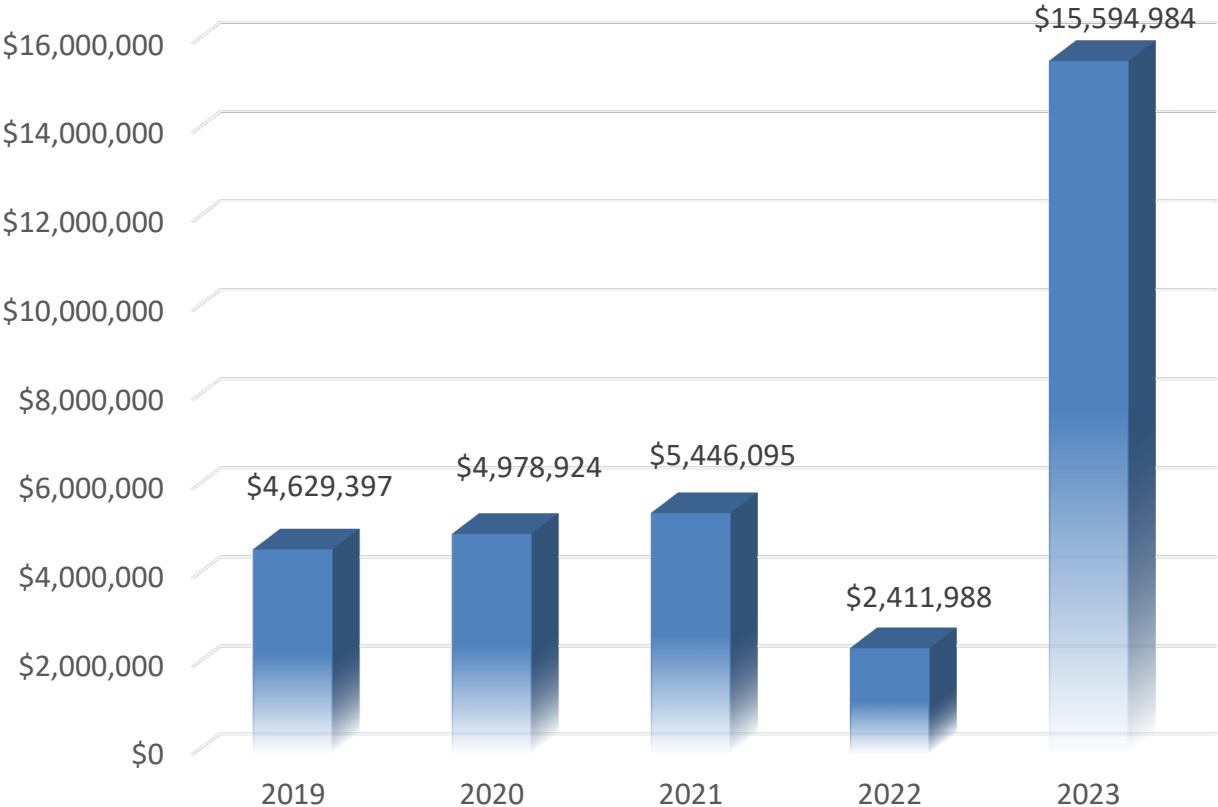
Projected Operating Expenses



Projected Maintenance Expenses



Projected Capital Expenditures



Outage Schedule

UNIT	DATES	TYPE
2	April 20 - June 2, 2019	Major
1	April 18 - June 14, 2020	Major
2	September 19-27, 2020	Cleaning
1	September 25 - October 3, 2021	Cleaning
2	April 9 - May 22, 2022	Major

Contract & Material Purchases

2019

- Tools & Equipment
- Bottom Ash System Controls Replacement

Contract & Material Purchases

2020 - 2022

- Tools & Equipment
- Conveyor Belt Replacement
- Flue Gas Moisture Analyzer
- Controls Upgrade
- 2-4 Feedwater Heater Replacement

Contract & Material Purchases

2023

- Tools & Equipment
- New Fly Ash Twin Paddle Mixes “B” FA Silo
- Purchase D8 Dozer
- Thickener Solids Removal System
- Admin Building Remodel

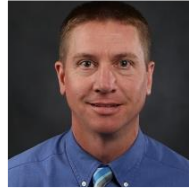
Procurement Staff

Jon Klein



- HDQ
- VP of Procurement

Shannon Julson



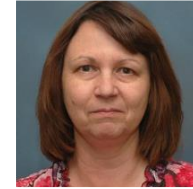
- HDQ
- Manager of Contracts

Chris Kurle



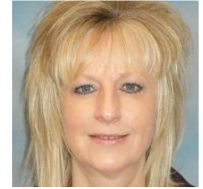
- HDQ
- Manager of Purchasing

Lynell Renner



- HDQ
- Assists AVS
- Procurement Coordinator

Shirley Tavis



- HDQ
- Assists AVS
- Procurement Coordinator



THANK YOU

for your Support and Services!

