



**BASIN ELECTRIC
POWER COOPERATIVE**

A Touchstone Energy® Cooperative 

LIGNITE ENERGY COUNCIL SPRING CONFERENCE

Leland Olds Station

April 2017

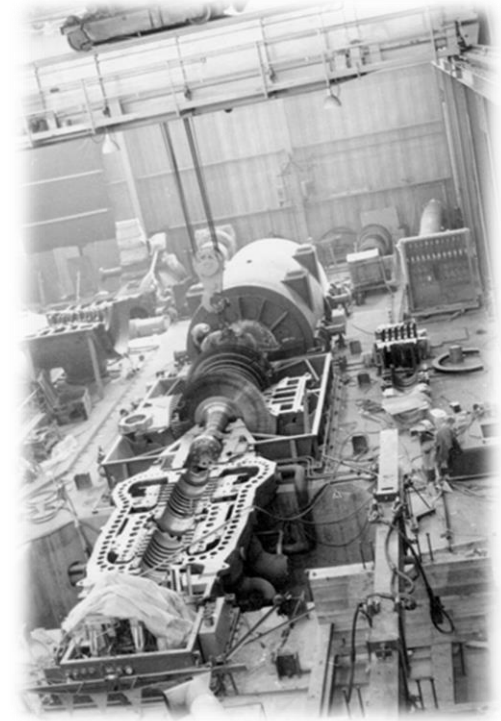
BUDGETED GENERATION

- Unit 1
 - 2017 - 1,348,293 MW
 - 2018 - 1,520,024 MW
- Unit 2
 - 2017 - 2,862,945 MW
 - 2018 - 2,601,680 MW



MAJOR OUTAGE SCHEDULE

- Unit 1
 - 2017 - 6 weeks; 9/23 - 11/4
 - 2020 - 5 weeks; Fall
- Unit 2
 - 2018 - 6 weeks; 4/14 - 5/27
 - 2021 - 6 weeks; Spring



2017 - 2018 EXPENDITURES

- Rotary Reclaimer
- Telehandler
- Horizontal Boring Mill
- (2) Off Highway Trucks (40 ton)
- Wheel Loader (988 class)



FUTURE EXPENDITURES

- New traveling water screens at the intake
- Rubber tire dozer
- Scraper



CONTACT INFORMATION

- **Russ Bosch**
 - Maintenance Superintendent (LOS)
 - (701) 745-7209
- **Kris Schmidt**
 - Coal & Yard Supervisor (LOS)
 - (701) 745-7220



- **Shannon Julson**
 - Manager of Contracts (HDQ)
 - (701) 557-5566
- **Chris Kurle**
 - Manager of Purchasing (HDQ)
 - (701) 557-5601

